

DEXTER YARD

A COMMUNITY THAT INSPIRES INNOVATION

VELOCITY LABS:
FLEXIBLE, MOVE-IN READY LAB AND
OFFICE SPACE AVAILABLE NOW

AVAILABLE OPTIONS

SOUTH TOWER – LEVELS 4-6

700 DEXTER SEATTLE, WA



AT THE HEART OF SEATTLE'S MOST DESIRABLE NEIGHBORHOOD, SOUTH LAKE UNION ENCOMPASSES CULTURE & INSPIRES INNOVATION

Introducing Dexter Yard, the newest and most exciting addition to South Lake Union. Its open, community-centric design offers 15 floors of tenant opportunities and onsite retail. Seattleites can enjoy playing in our yard, which includes dynamic retailers and a one-of-a-kind 5,500 square foot multi-use space called The FieldHouse. From work to play, Dexter Yard is a welcoming and vibrant space that's always buzzing with activity. The building is LEED Gold Certified.



INNOVATION IN MOTION

BioMed Realty has developed flexible, move-in ready lab and office space built for groundbreaking research inside a premier selection of our Class A life science properties located in major life science ecosystems across the US and UK. With our vertically integrated platform that provides unmatched expertise and world-class quality, the Velocity Labs infrastructure and technology allows biotech innovators to execute mission-critical research and scale as needed, all while reducing expenditures.

VELOCITY LABS TECH SPECS

ELECTRICAL

Up to 20 w per sf in laboratory areas

HVAC SYSTEMS

Combination of existing shell and core HVAC systems (60%) and shell and core DOAS system ventilation (40%)

Specialized exhaust and pressure control with 6 ACH, temperature range 70-72°F, no humidity control or special filtration required

Existing Make-Up Air Units (MAU) used, providing up to 9,200 CFM per floor

PLUMBING

Potable and non-potable water supply for offices and labs

Laboratory plumbing and lab gases with central sterilization facility



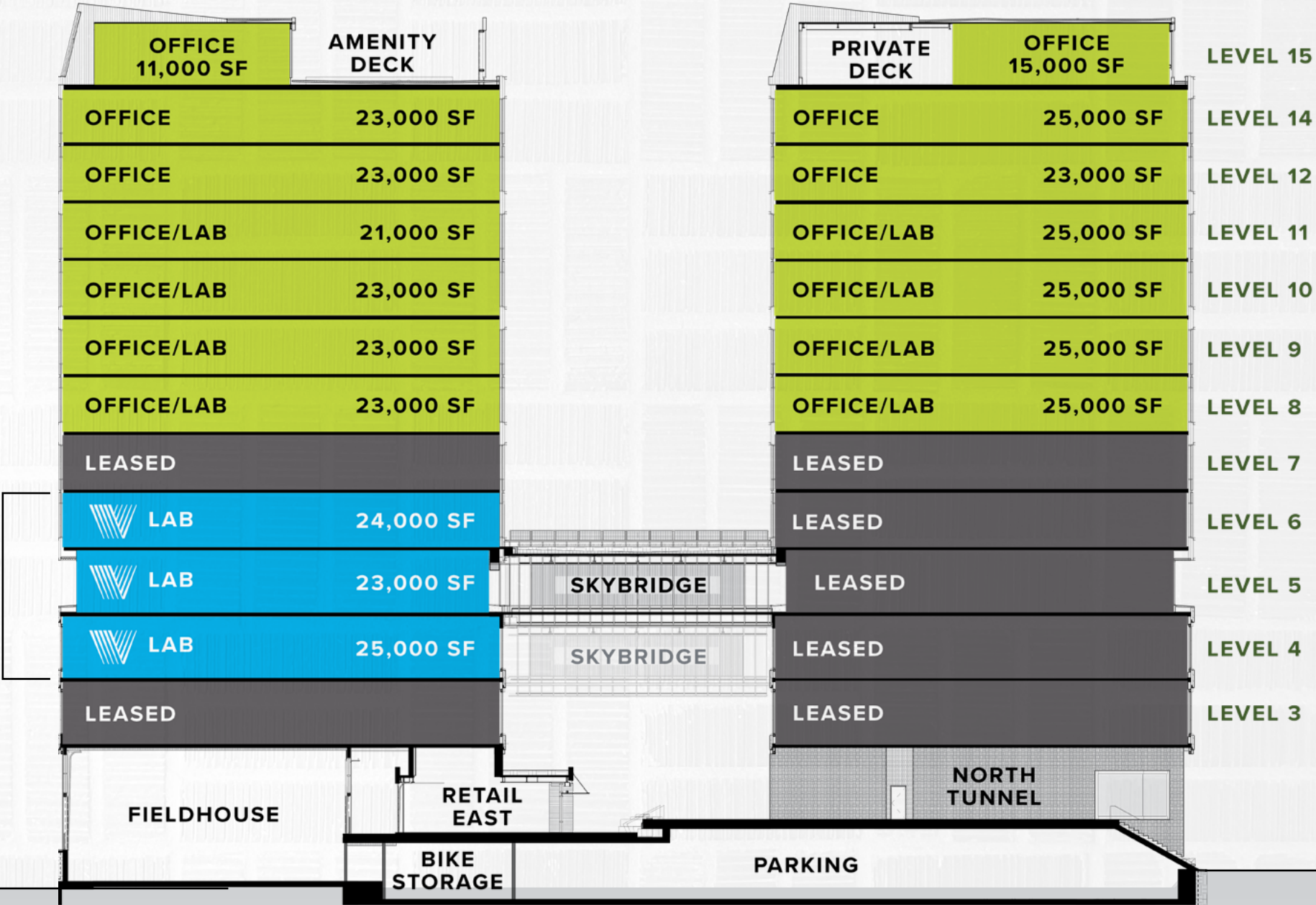
AVAILABLE OPTIONS

South Tower – Levels 4-6

SOUTH TOWER
LEVELS 4-6
±72,000 SF

SOUTH TOWER

NORTH TOWER



SECTION VIEW FROM 8TH AVE N

◀ BACK TO STACKING PLAN

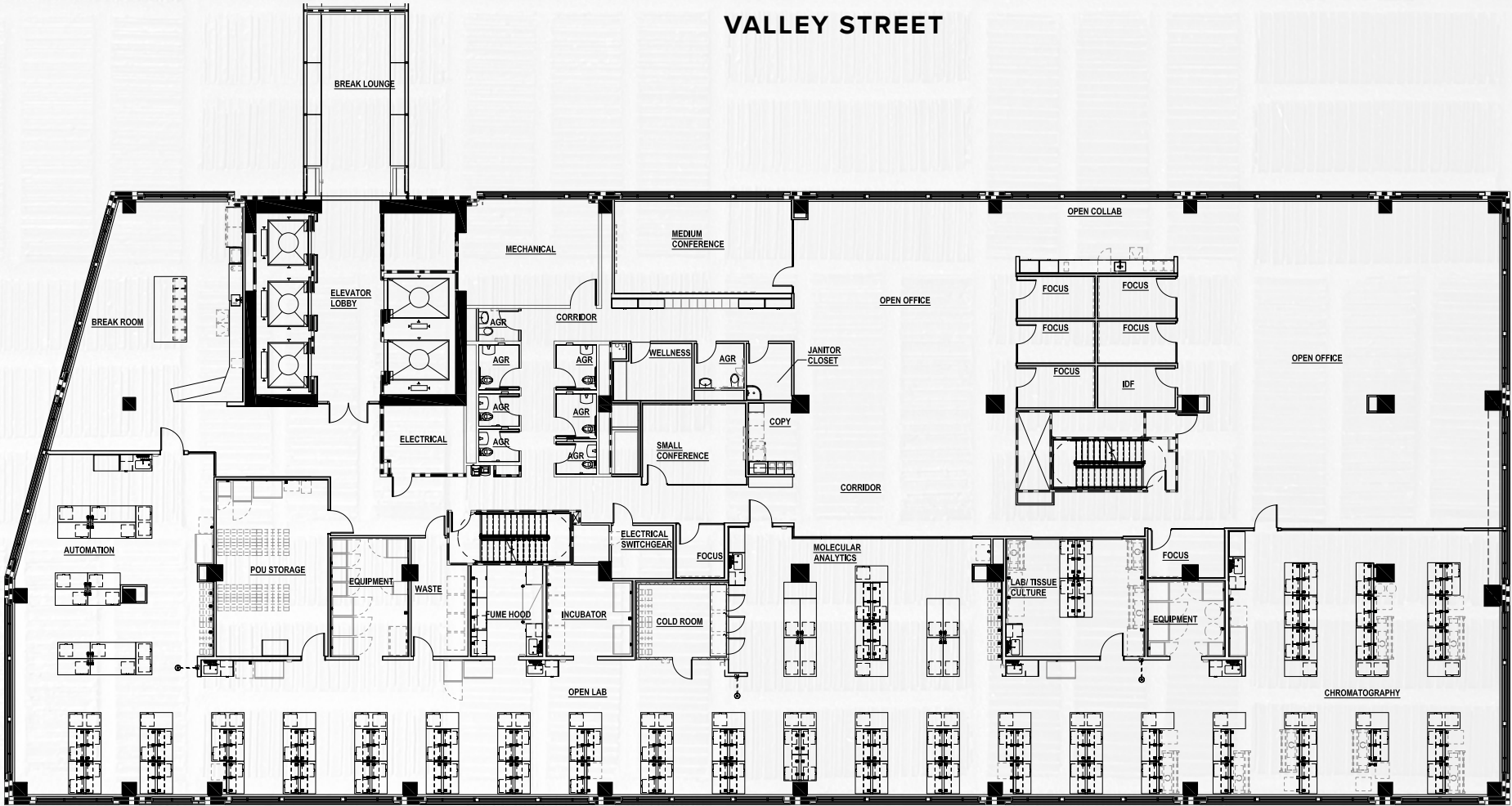
SOUTH TOWER



LEVEL 4

± 25,000 SF

DEXTER AVE N



8TH AVE N



VIEWS OF THE
SPACE NEEDLE



VIEWS OF LAKE
UNION

◀ BACK TO STACKING PLAN

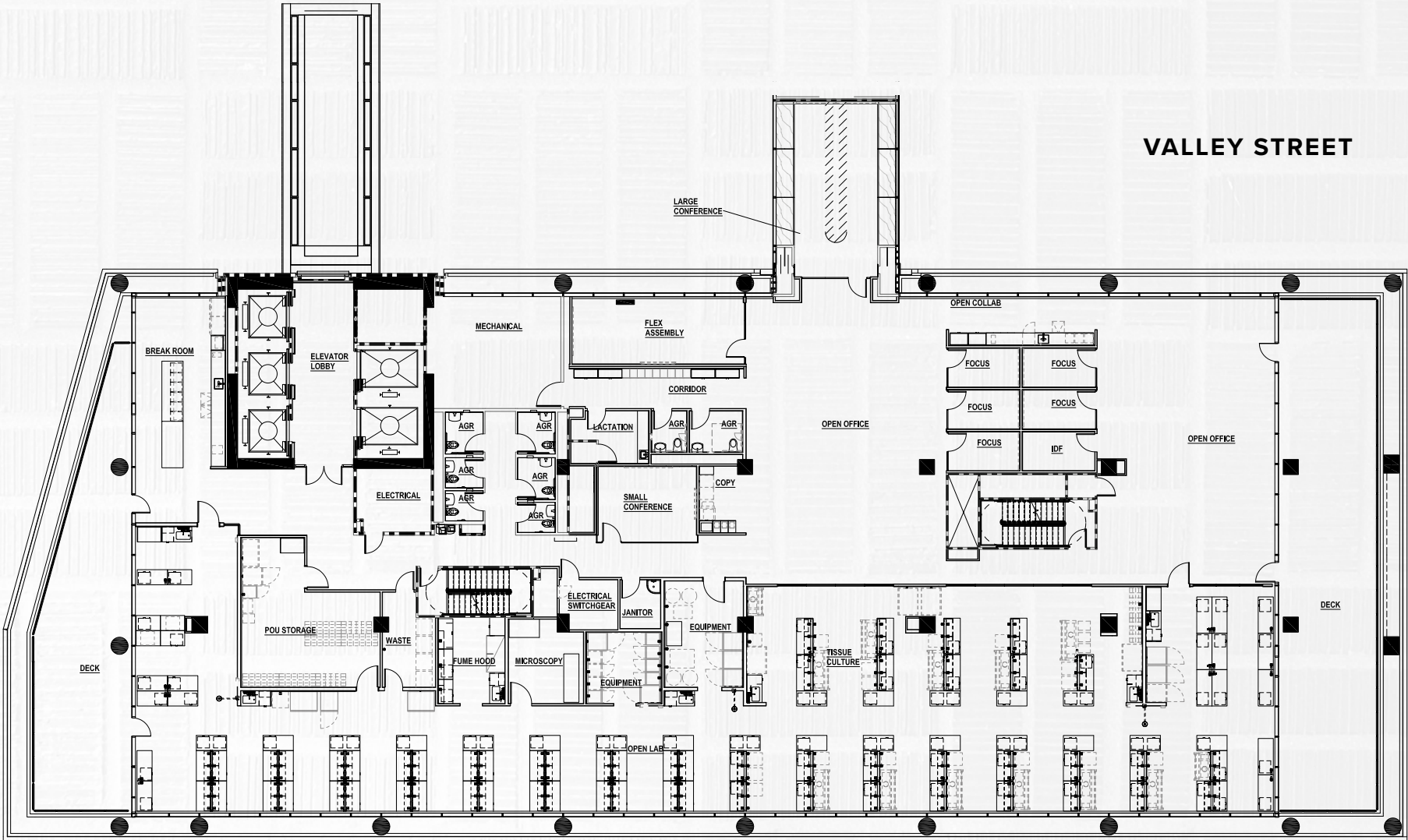
SOUTH TOWER

 **VELOCITY LAB**

LEVEL 5

± 23,000 SF

DEXTER AVE N



VALLEY STREET

8TH AVE N

◀ VIEWS OF THE SPACE NEEDLE

▶ VIEWS OF LAKE UNION

◀ BACK TO STACKING PLAN

SOUTH TOWER

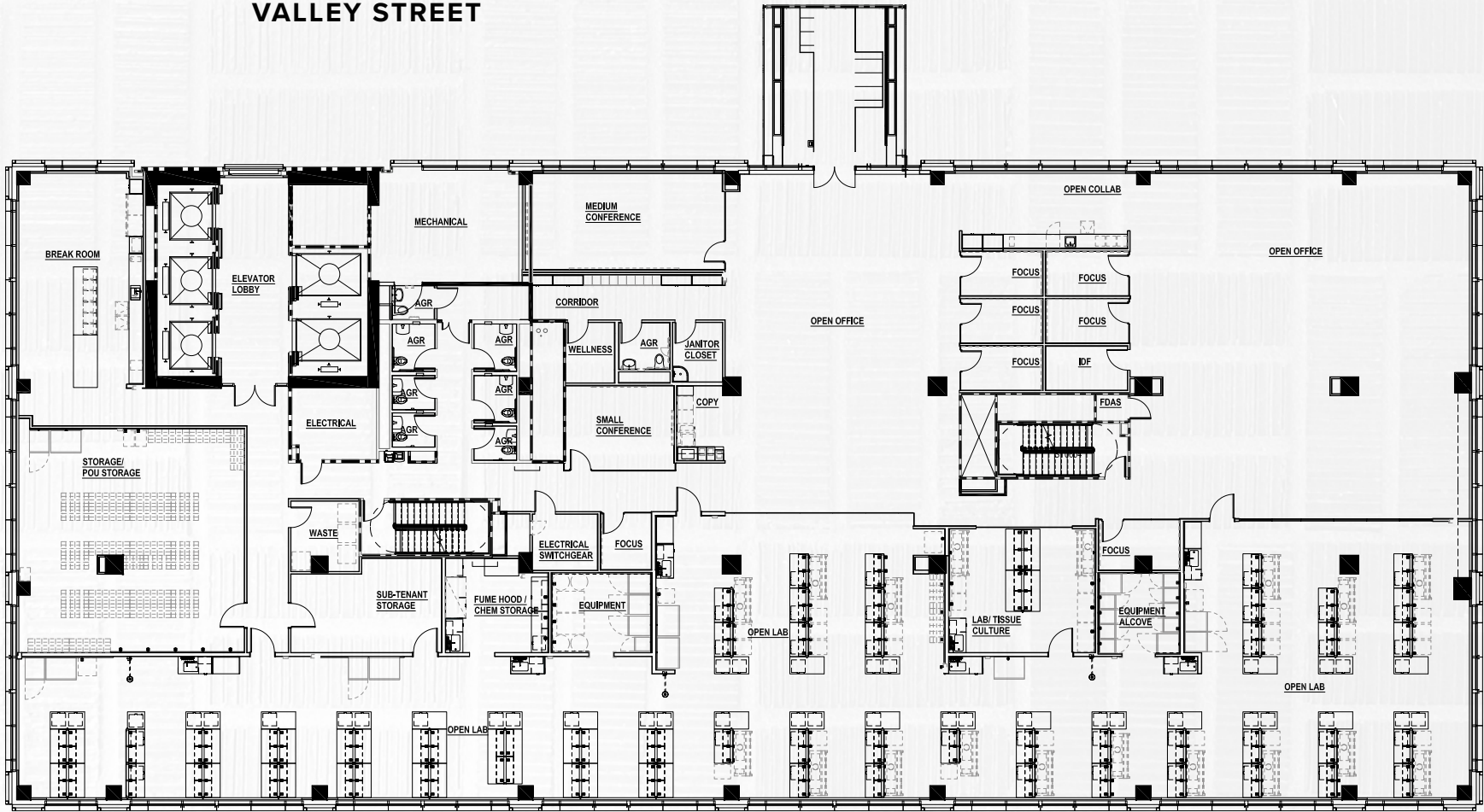
 **VELOCITY LAB**

LEVEL 6

± 23,000 SF

DEXTER AVE N

VALLEY STREET



8TH AVE N

◀ VIEWS OF THE SPACE NEEDLE

▶ VIEWS OF LAKE UNION

ENVIRONMENTS THAT FOSTER COLLABORATION

Dexter Yard offers 26,600 square feet of amenities that foster an environment of social connectedness and interaction among neighbors and the community.

Focused on lifestyle necessities, food and drink, services, and friendly competitive recreation, the ground plane at Dexter Yard will soon become a casual approachable atmosphere morning to night, weekday to weekend.



A PLACE THAT LOOKS AFTER YOU AND YOUR PEOPLE

- Open block campus
- 15 floors of tenant opportunity
- Flexible floorplates
- Collaborative work environments
- Top tech-talent neighborhood
- On-site retail
- Unique rooftop views of Seattle and South Lake Union



SHOWERS
& LOCKERS



CONFERENCE
ROOMS



BIKE
STORAGE



RETAIL
AMENITIES

SLU BRU

CAFE HAGEN

COMING SOON

F S 8

PILATES · TONE · YOGA

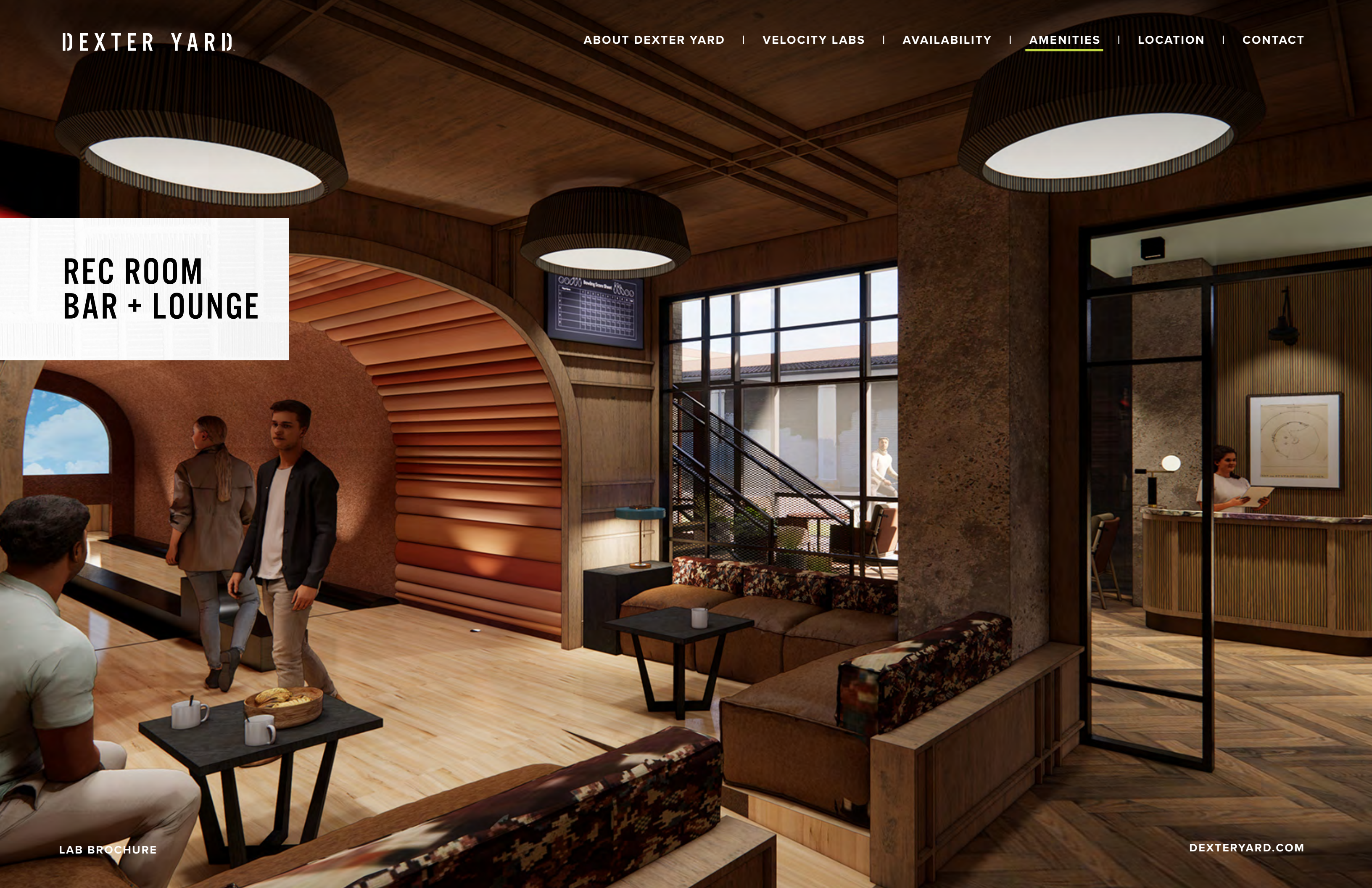
REC ROOM
BAR + LOUNGE



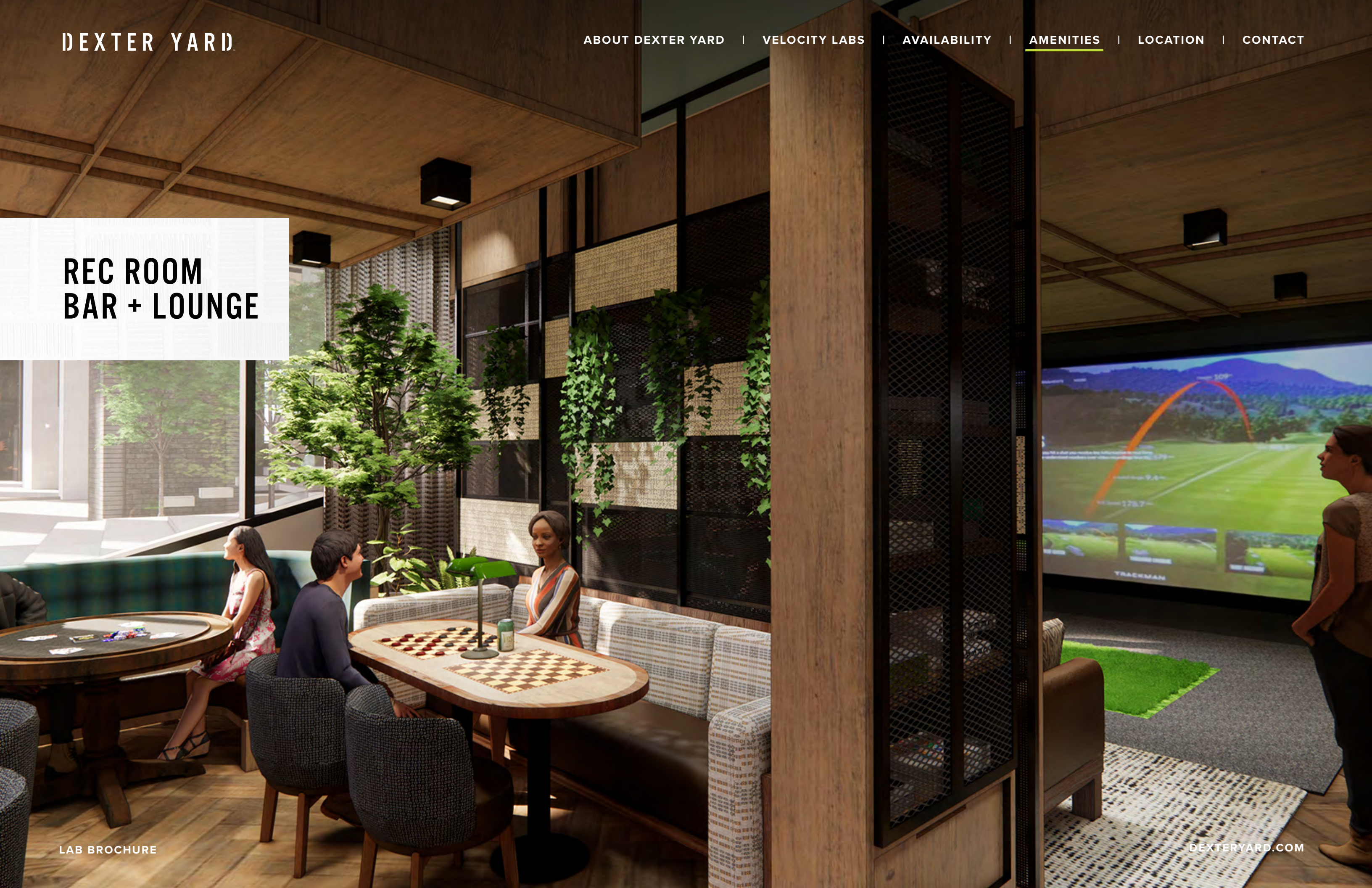
REC ROOM
BAR + LOUNGE



REC ROOM
BAR + LOUNGE



REC ROOM
BAR + LOUNGE



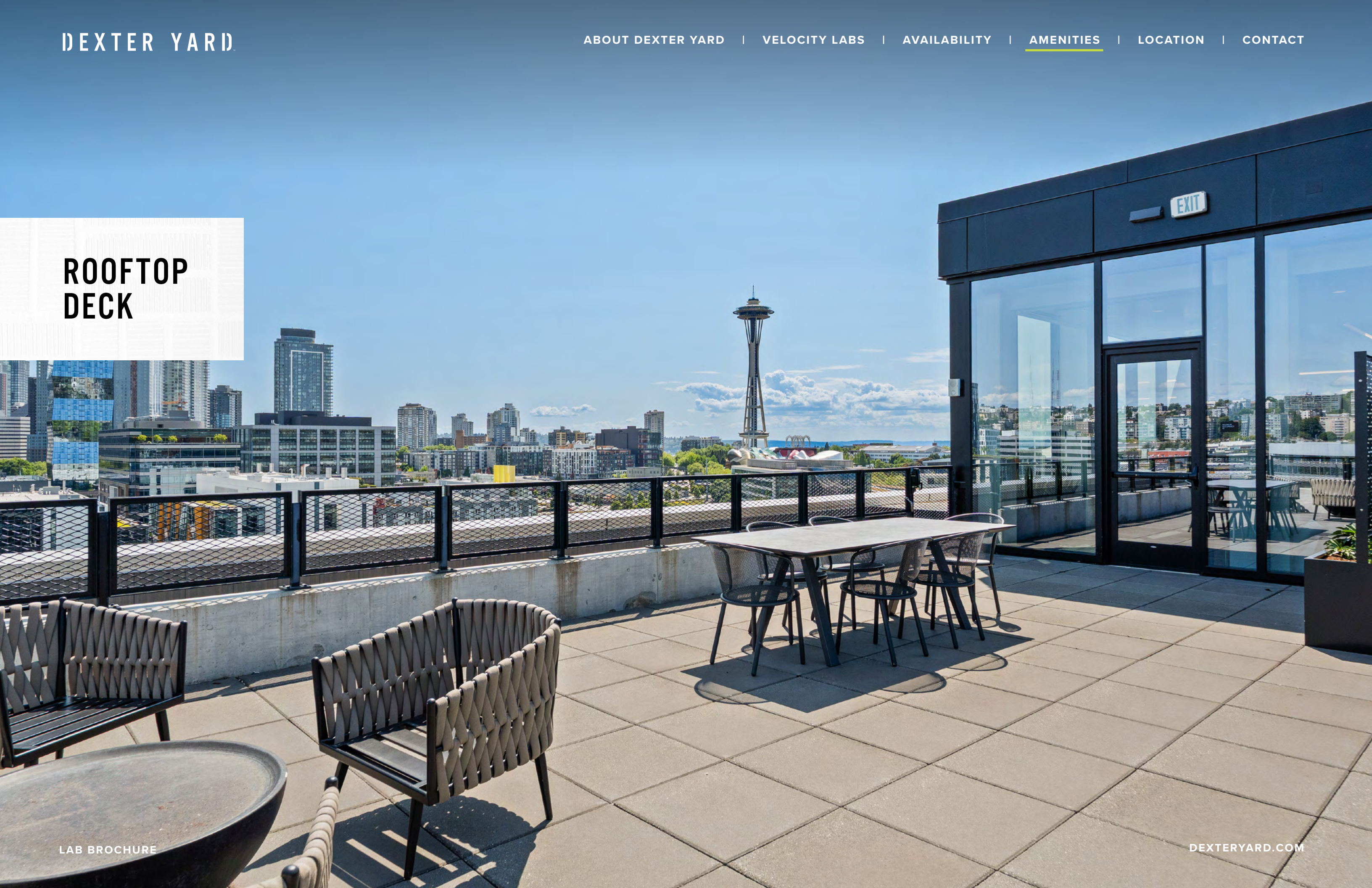
SPEAKEASY



SPEAKEASY



ROOFTOP
DECK



VIEW FROM
5TH FLOOR



GETTING HERE

➤ GET DIRECTIONS

I-5 ON/OFF RAMP
.4 MILES

HIGHWAY 99
1 BLOCK

NEARBY BUS STOPS
5 STOPS

SLU STREET CAR
.3 MILES

LAKE UNION BIKE LOOP
.25 MILES



NEIGHBORHOOD AMENITIES

WITHIN
1 MILE

LAB BROCHURE

RESTAURANTS

40+

➤ [VIEW RESTAURANTS](#)

SERVICES

15+

➤ [VIEW SERVICES](#)

LODGING

20+

➤ [VIEW LODGING](#)

BIOMED REALTY PROPERTIES

7

DEXTERYARD.COM



CORPORATE
NEIGHBORS

 TECH  LIFE SCIENCE

ABOUT BIOMED REALTY

Dexter Yard is the latest example of BioMed Realty’s growing portfolio of extraordinary development projects. BioMed Realty, a Blackstone portfolio company, is a leading provider of real estate solutions to the life science and technology industries.

100%
of our portfolio concentrated in the core life science markets of Boston/Cambridge, San Francisco, San Diego, Seattle, Boulder and Cambridge, U.K.

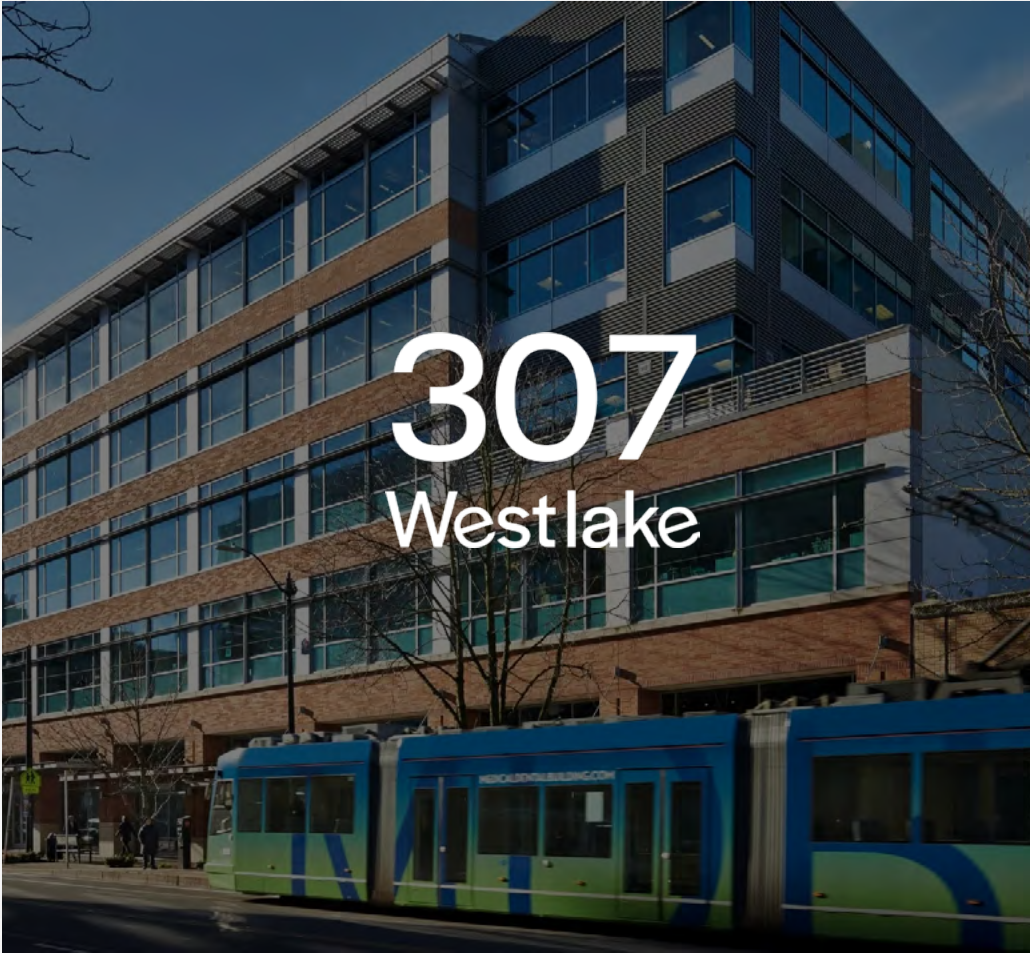
17M SF
owned and operated in leading innovation markets

300+
in-house experts and life science real estate professionals

2M SF
in active construction to meet the growing demand of the life science industry

26M SF
available to accommodate tenants as they grow

200+
tenant partners in leading innovation markets



LEASING



JOE GOWAN

Senior Managing Director
206 607 1738
joe.gowan@jll.com

BAILEY AGGEN

Senior Associate
206 915 1040
bailey.aggen@jll.com

A  BioMed Realty property

WE'RE SOCIAL

